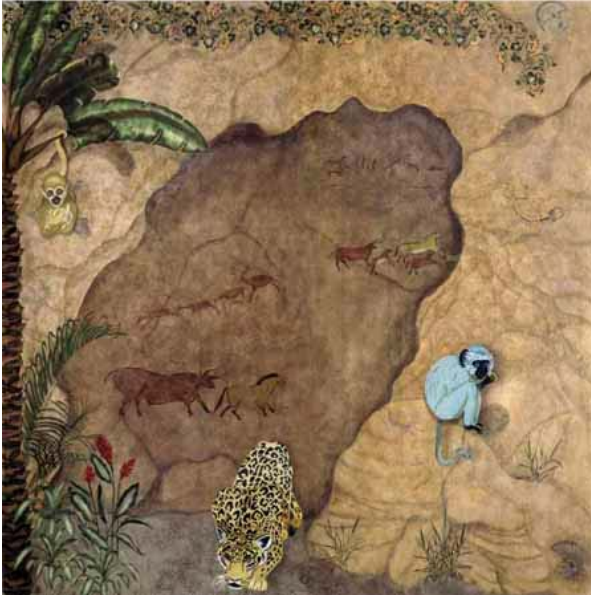


## Technique 7

### Cave and Rocks



Jungle murals can be fun to create, especially with our primitive designs and jungle creatures. The background was done with natural sea sponges and latex paints tinted to match Decoart #136 Base Flesh, #026 Mauve, and #095 Neutral Gray. A final wash of Faux Glazing Liquid and Decoart #163 Honey Brown was added to give the red iron oxide tones.

You can use a shield cut from a paper bag to produce the cave opening and rocks. For the cave, sketch an uneven line lightly with a pencil and then just position the shield above the line for the opening and use Easy Blend Ebony Black with a touch on mineral spirits on a paper towel. Simply scrub the wad of toweling into the pot of Easy Blend and rub it onto the wall surface moving downward over the edge of the frisket so as not to raise it up. Deepen the color as needed to establish the depth of the cave.

Rock outcroppings are formed by shielding the area you want for the rock and using a stencil brush and Easy Blend Charcoal Grey to darken just the edge where the shield meets the wall surface. Move the shield over randomly forming the uneven rock shapes. Try to get a realistic look and darken some areas more than others, making ridges and cracks.

Position plant life around the rocks. When you layer your stencils on top of a dark background or one with stenciled images on it, you must start by laying down a light base coat of Decoart Taffy Cream #005 through the stencil to block out the other images and give your colors more clarity. Just be sure that you don't overload your brush, and build up the opacity slowly, speeding up the process with a hair dryer if need be.